



# The Watermark Belize Hotel

## *Banquet Sales Kit*

Welcome to San Pedro's premier event destination.

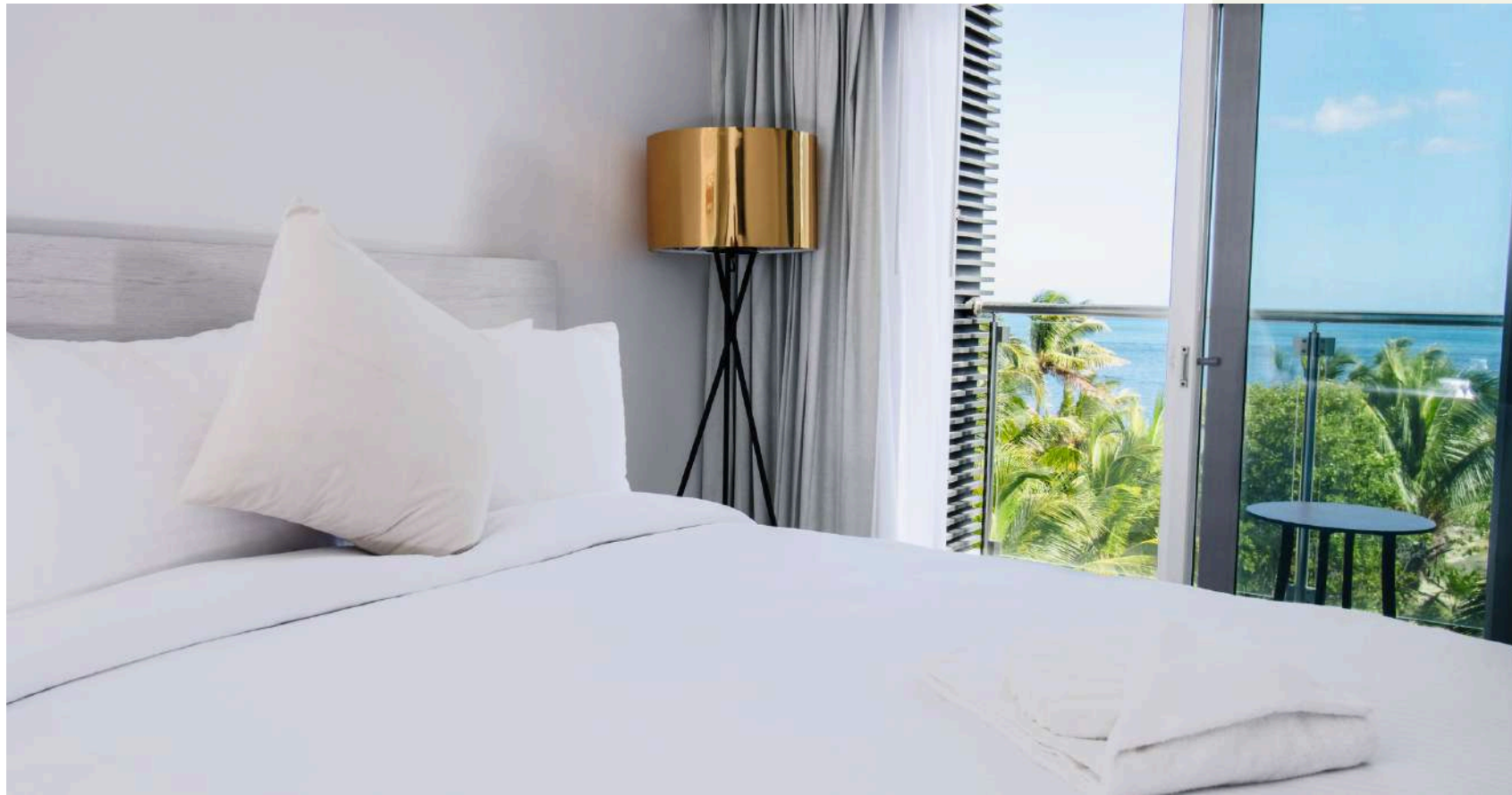
*The* **WATERMARK**  
*Belize Hotel* MUY'ONO COLLECTION



## Table Of Contents

---

<b>Hotel</b>	<b>3</b>
<b>Venue</b>	<b>4</b>
<b>Food &amp; Beverage</b>	<b>5</b>
<b>Pricing &amp; Inclusions</b>	<b>8</b>
<b>Accommodations</b>	<b>9</b>
<b>Adventures</b>	<b>12</b>
<b>Event Planners</b>	<b>13</b>
<b>Location &amp; Transportation</b>	<b>18</b>
<b>Contact</b>	<b>19</b>



# Why Choose The Watermark?

Where every event leaves a lasting impression.

Discover an extraordinary destination for weddings, corporate retreats, and private events! The Watermark Belize Hotel in San Pedro offers a perfect blend of tropical charm and elegance.

With stunning views of the Belize Barrier Reef and Ambergris Caye, our charming hotel and rooftop lounge provide an immersive setting for special occasions.

## Elegant Caribbean-View Venue

- Air-conditioned event space with stunning views of the Belize Barrier Reef.

## Spacious Accommodations

- From two-bedroom suites to ocean-view king rooms, find your perfect retreat.

## Personalized Services & Planners

- Our dedicated team ensures your event is flawless from start to finish.

## Indulgent Dining & Beverages

- Savor a fusion of Belizean and international cuisine in a curated menu.

## Upscale Amenities

- Enjoy golf cart rentals, a rooftop bar and pool, Wi-Fi, and personalized service.

## Adventure & Relaxation

- Embark on guided excursions or rejuvenate at our spa with concierge service.



# Coral Vista Ballroom

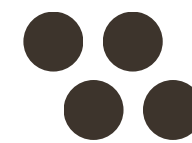
A venue of elegance and versatility.

Step into sophistication at the 6th-floor Coral Vista Ballroom. This air-conditioned venue accommodates up to 300 guests and boasts panoramic views of San Pedro and the Caribbean Sea, creating an enchanting ambiance for weddings, presentations, meetings, and more.

## Ballroom Specs

Size

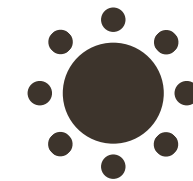
2,963 sq. ft. / 3,000 sq. ft.



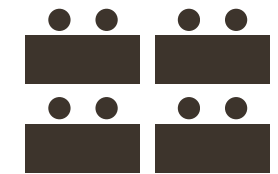
Cocktail | 300 



Theater | 225 



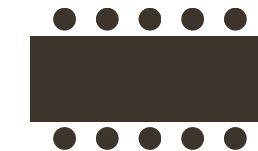
Banquet | 150 



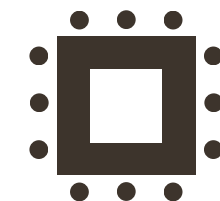
Classroom | 100 



U-Shaped | 34 



Boardroom | 24 



Hollow Square | 40 



**Food & Beverage**

# Personalize Your Culinary Experience

Indulge in a curated menu featuring a fusion of Belizean and international flavors, from morning coffee to cocktail hour. The region's rich culinary heritage shines through fresh seafood, tropical cocktails, and savory steaks.

- Choose between plated meals or buffet-style dining.
- Elevate your event with custom signature cocktails.
- Ensure seamless hospitality with our dedicated service team.

[Explore Menu](#)



# Tailor Your Bar Offerings

## Corkage Fees

A corkage fee is a charge for serving drinks not provided directly by the hotel.

Liquor	BZ\$45/Bottle   US\$22.5/Bottle
Champagne & Wine	BZ\$35/Bottle   US\$17.5/Bottle
Beer	BZ\$24/Case   US\$12/Case
Soda	BZ\$24/Case   US\$12/Case
Juices	BZ\$10/Gallon   US\$5/Gallon
Bottled Water	BZ\$1/Bottle   US\$0.50/Bottle



## Recommended Bar Stock

Please note that this list is based on past events, and your guest preferences may differ.

ITEMS (By Bottle)	Number Of Guests				
	25	50	100	200	300
Champagne	5	10	20	40	60
White Wine	3	5	10	20	30
Red Wine	8	15	30	60	90
Rum	4	8	12	24	36
Whiskey	4	8	12	24	36
Gin	2	4	8	16	24
Vodka	4	6	8	16	24
Beer	48	96	216	432	648
Soda & Tonic Water	3/3	6/6	12/12	24/24	48/48
Sodas	24	48	96	432	528
Water	24	48	96	432	528



# Pricing & Inclusions

Base rental fee and additional services.

## Coral Vista Ballroom Venue Rental - BZ\$5,600 | US\$2,800

### What Is Included?

- Personal event coordinator to work with you every step of the way.
- Table and chair setup according to your preferred layout.
- Podium, projector, and screen setup for presentations and entertainment.

### Additional Services & Rentals:

Food & Beverage Costs	Custom Quote
Serving Staff	Custom Quote
Round (Banquet) Table	BZ\$10   US\$5
Cocktail (Tall) Table	BZ\$8   US\$4
8' Meeting Table	BZ\$10   US\$5
Table Cover	BZ\$7   US\$3.5
Chair	BZ\$2   US\$1
Chair Cover	BZ\$2   US\$1
2nd Projector	BZ\$250   US\$125
2nd Screen	BZ\$150   US\$75
PA System	BZ\$500   US\$25
<ul style="list-style-type: none"> <li>• (2 Microphones, Mixer, Powered Speakers)</li> </ul>	





# Accommodations

# Stylish Rooms & Suites For Two



## Master Suite

2 Guests | 620 sq. ft.  
King bedroom, bathroom, dining area, kitchenette, work desk, and balcony.



## Oceanview King Room

2 Guests | 440 sq. ft.  
King-sized bed, bathroom, work desk, and balcony with Caribbean views.

# Comfort For The Whole Group



## Two Bedroom Family Room

4 Guests | 667 sq. ft.  
Two queen sized-beds, one bathroom, work desk, and balcony.



## Signature Two Bedroom Suite

5 Guests | 984 sq. ft.  
King bedroom, queen bedroom, two bathrooms, dining area, kitchenette, and balconies.



# Adventures

Immerse in unique Belize experiences.

Explore a world of possibilities with our curated guided tours. Let us handle all the arrangements—simply inquire about group, private, & custom tours for a seamlessly coordinated adventure.

## Activities & Guided Excursions

- Shark Ray Alley, Hol Chan, & Mexico Rocks Snorkeling
- SCUBA Diving Tours & Courses
- Aerial Great Blue Hole
- Xunantunich, Lamanai, & Altun Ha Mayan Ruins
- Belize Zoo Experience
- Jungle Ziplining & Cave Tubing
- Actun Tunichil Muknal (ATM Cave)
- Reef & Fly Fishing
- Lamanai River Experience
- Sunset Catamaran Cruise
- Indulgent Spa Services
- Secret Beach Via Golf Cart



# Event Planners

# Nailea Kotch Martinez

## *Sales Manager*



Nailea, a proud native of the enchanting town of San Pedro, boasts an illustrious eight-year tenure in the dynamic hospitality sector. Fueled by an unwavering passion for personal and professional development, she navigates her career journey committed to growth and perpetual learning.

### About Me

- Grew up in San Pedro, Ambergris Caye.
- Eight years of experience in hospitality.
- I enjoy baking as a creative outlet and traveling to experience new places and cultures, enriching my personal and professional life.

### Why I Love Event Planning

- I enjoy working in the hospitality industry for the chance to engage with diverse clients and explore new places and cultures through them.
- Working on the island brings me joy as I introduce guests to my home and witness their admiration for its beauty. It's heartening to see visitors develop a deep connection with the island. Event planning is especially fulfilling as I become part of our guests' important life events.

### Contact Info

- Phone: [+501 226-5025](tel:+5012265025)
- WhatsApp: [+501 611-4854](tel:+5016114854)
- Email: [nailea@thewatermarkbelize.com](mailto:nailea@thewatermarkbelize.com)

# Shanda Cal

## *Wedding Sales Coordinator*

---



Meet Shanda. With a passion for creating unforgettable moments, she is dedicated to transforming your vision into reality. Shanda possesses an eye for detail and a knack for organization, ensuring every element of your event is smoothly executed. Known for her warm personality and ability to forge genuine connections, Shanda takes pride in creating personalized experiences for her clients.

### About Me

- Grew up in the Culture Capital of Belize- Dangriga Town.
- 5+ years in hospitality.
- Traveling and meeting people brings me immense joy as it allows me to explore new cultures and broaden my perspectives.

### Why I Love Event Planning

- The thrill of coordinating intricate details, from logistics to design, keeps me engaged and excited throughout the process.
- The joy of seeing clients delighted by a well executed event is incredibly rewarding.
- Meeting new people and creating unforgettable experiences.

### Contact Info

- Phone: [+501 613-0886](tel:+5016130886)
- Email: [shanda@muy-ono.com](mailto:shanda@muy-ono.com)

# Lizbeth Casasola

## *Event Coordinator & Wedding Planner*

---



Say hello to Lizbeth, your go-to girl for weddings, private events, and group getaways! With a contagious enthusiasm and a passion for turning dreams into reality, Liz takes care of every intricate detail to make your event unforgettable. She cherishes the uniqueness of each event and the connections she forms with clients throughout the planning process.

### About Me

- Grew up in the Mountain Pine Ridge Area.
- 15+ years of experience in wedding and event planning.
- Delicate details and eco-chic celebrations are some of my favorite wedding trends.

### Why I Love Event Planning

- Meeting and getting to know guests is incredibly rewarding.
- Designing unique and personalized elements, from grand features to subtle surprises.
- Ensuring a stress-free and smooth event day, allowing everyone to relax and celebrate.

### Contact Info

- Phone: [+501 822-1272](tel:+5018221272)
- Private & Group Events: [lizbeth@muy-ono.com](mailto:lizbeth@muy-ono.com)
- Weddings: [liz@belizedestinationweddings.com](mailto:liz@belizedestinationweddings.com)



## Lizbeth's Portfolio

**“Liz has an amazing talent in designing/planning weddings...”**



“We could not have asked for better service. It took so much stress off of us to have her arrange everything, and she arranged for everything we asked for and more...She made us feel relaxed, joyful, and taken care of on our wedding day- exactly what we needed.”



“Liz, the wedding planner, went above and beyond to make sure our dreams became reality.”



“Liz has an amazing talent in designing/planning weddings, I knew I could trust all my ideas to come to life with her help. We were so thankful for her kindness and compassion during the whole process too.”

# Location & Transportation

Easy access to and around paradise.

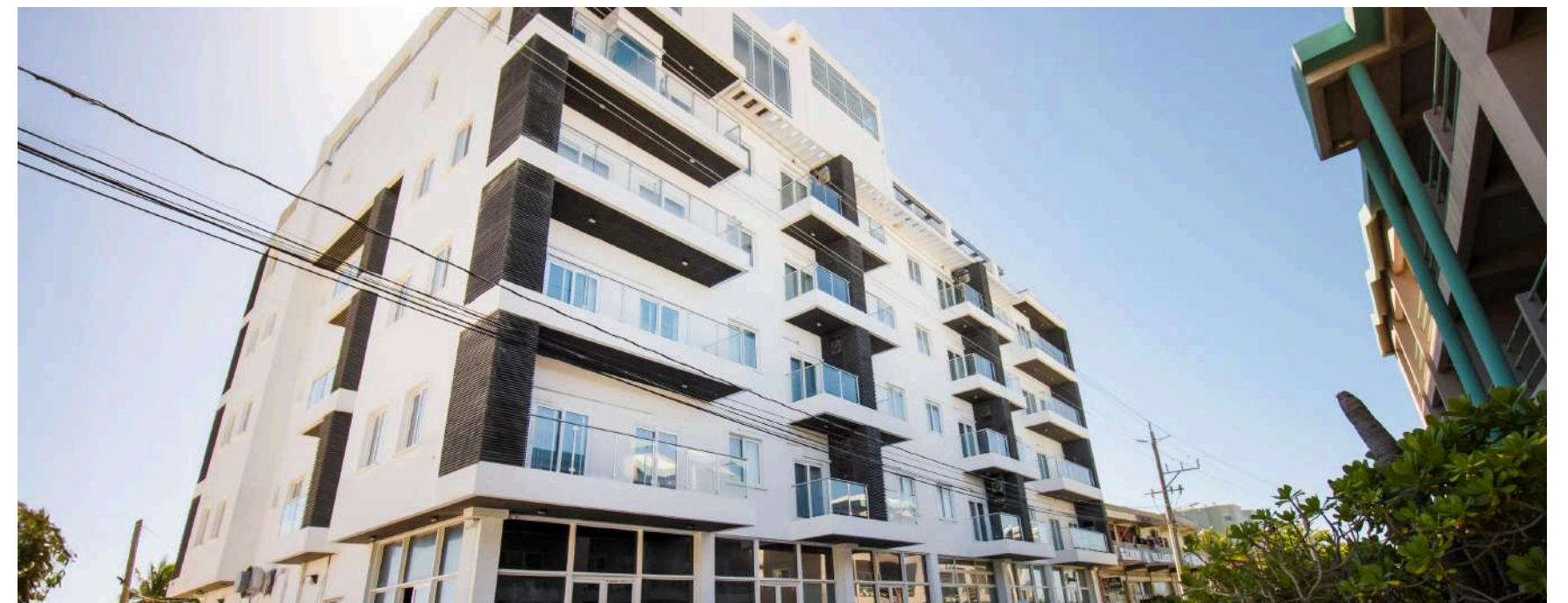
The Watermark Belize Hotel is close to the vibrant San Pedro town yet tucked away just north of the bridge. Once in Belize, take a commuter flight via Maya Island Air or Tropic Air to Ambergris Caye, followed by a quick taxi ride to the hotel. With on-site golf cart rentals and free parking, guests can explore the island at their own pace.

## Transportation Services

- Commuter Flight Coordination
- VIP Airport Arrival
- Ground Transfer Coordination
- On-Site Golf Cart Rentals

## Proximity To Nearby San Pedro Attractions

- 35-minute ride to Secret Beach
- 10-minute ride to San Pedro airport
- 10-minute ride to downtown San Pedro
- 5-minute ride to nearest 24-hour Urgent Care





If you have any other questions regarding catering or special occasions, please get in touch with us.

1/4 Mile North, Tres Cocos Area San Pedro Town, Ambergris Caye, Belize

International: [+1 855 203-3011](tel:+18552033011)

Local: [+501 226-5025](tel:+5012265025)

WhatsApp: [+501 611-4854](tel:+5016114854)

[events@thewatermarkbelize.com](mailto:events@thewatermarkbelize.com)

[thewatermarkbelize.com](http://thewatermarkbelize.com)



Subscribe For Belize Wedding & Event Updates →

# Policies

Crafting a seamless event experience.

---

## Prices

Price and rental rates are negotiable based on group size. All prices are subject to service charges and G.S.T.

## Final Guest Count

Food and beverage options must be confirmed no later than seven (7) business days before the event, and the total number of guaranteed attendees must be submitted seventy-two (72) hours before the event.

## Cancellation Policy

The event can be cancelled without penalty up to thirty (30) days before the event. Cancellations less than thirty (30) days but not less than seven (7) days prior will incur a charge equivalent to the space rental fee. Cancellations less than seventy-two (72) hours before the event will incur a charge equivalent to the space rental fee and 50% of other estimated costs. If the event is canceled less than twenty-four (24) hours before the scheduled date, the total estimated cost will be forfeited.

## Confirmation & Deposit

The booking party must sign and return a copy of the Agreement no later than seventy-two (72) hours before the event. A deposit of 50% of the space rental fee is required to confirm the date. Full payment of the estimated total is due one (1) week before the event, and final invoices will be available the next business day.

## Food & Beverage

Outside food and beverages are strictly prohibited without the express permission of venue management. Additional fees may apply. All dietary requirements and restrictions must be communicated to the hotel at least seventy-two hours before the event. This includes but is not limited to food-borne allergies or other sensitivities.

## Event Decor

Open flames as a part of event decoration are strictly prohibited. An additional fee of BZ\$200 will be charged for clean-up if confetti is used. The booking party is required to provide a "runner" to place over the venue's linen if rose petals or other organic decorations will be in direct contact with covers provided by the venue.

## Damage & Liability

The Watermark Hotel is not responsible for any damage to or loss of articles left in the hotel by the booking party or their attendees before, during, or after the event. The booking party will be liable for all damages to the venue and its amenities, including hotel rooms if booked on behalf of attendees. Defacing, tacking, nailing, or taping to any permanent surface is strictly prohibited.

## Private Venue

At The Watermark, we ensure that only one event is hosted at a time, providing our guests with an exclusive venue experience. If you wish to reserve the entire hotel for your event, contact us for a customized quote.